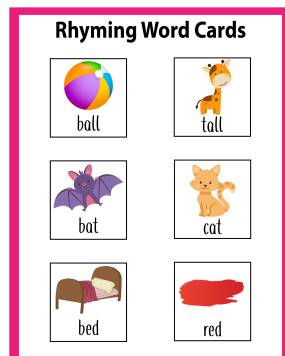


Rhyming Words

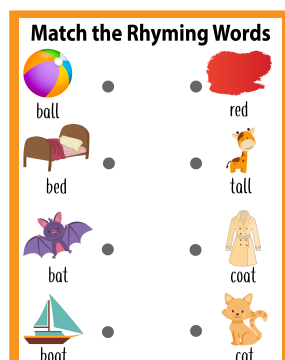
Table Of Contents

Page



Rhyming Word Cards (10 pages)

2



Match the Rhyming Words (10 pages)

12



Circle the Rhyming Word (10 pages)

22

Rhyming Word Cards



ball



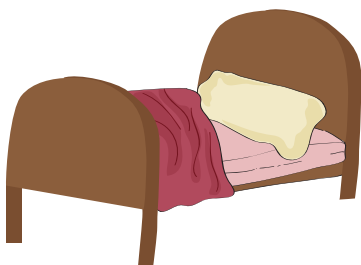
tall



bat



cat

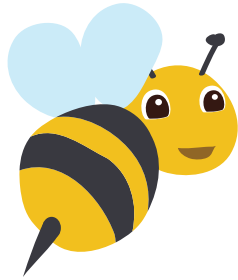


bed

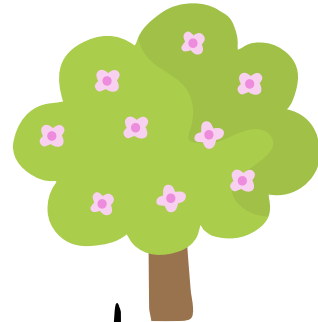


red

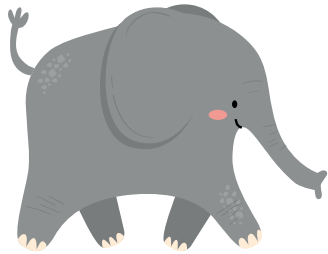
Rhyming Word Cards



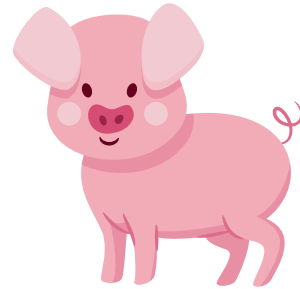
bee



tree



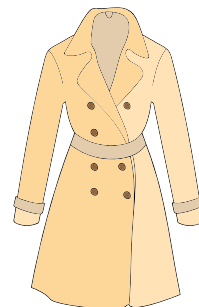
big



pig



boat

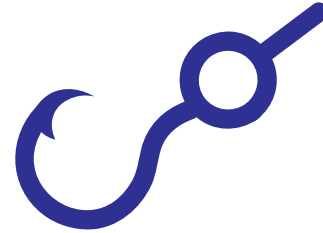


coat

Rhyming Word Cards



book



hook



box



fox

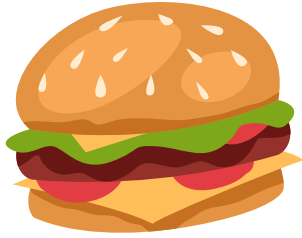


bug

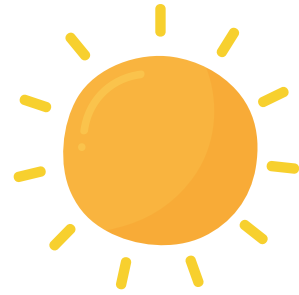


mug

Rhyming Word Cards



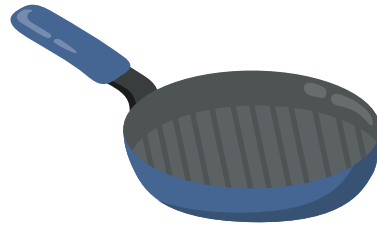
bun



sun



can



pan



car



jar

Rhyming Word Cards



cat



hat



cub



tub

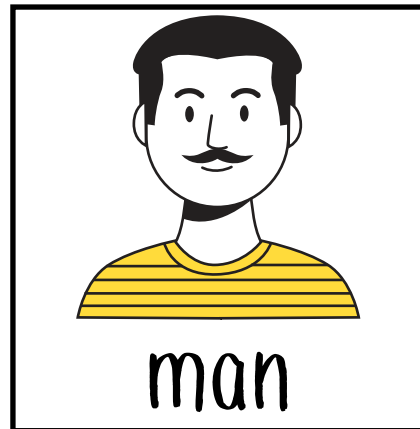
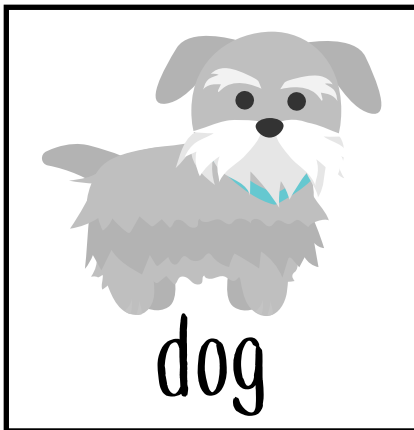
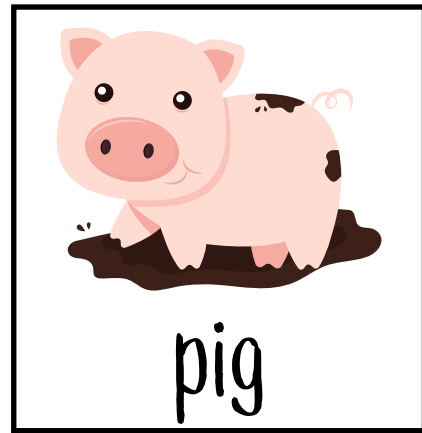


cut

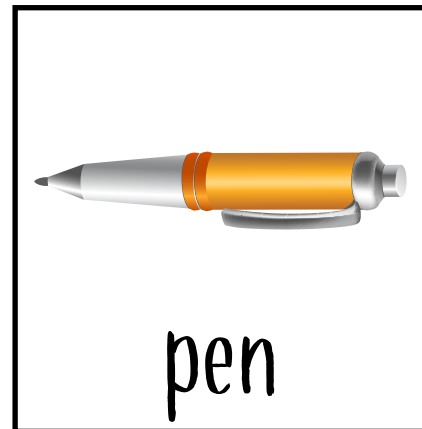
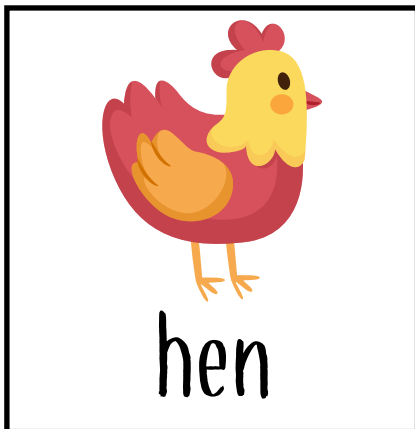
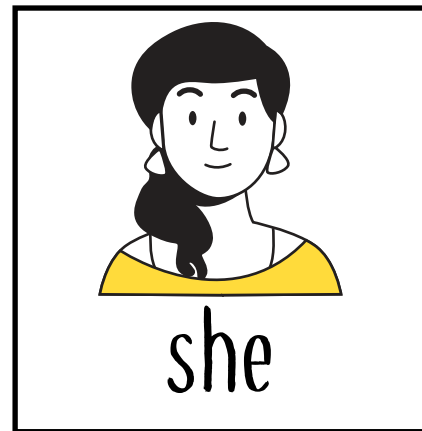
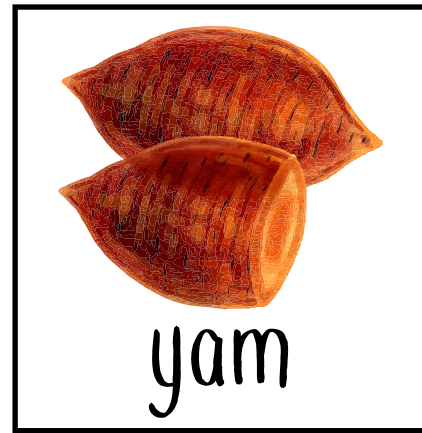
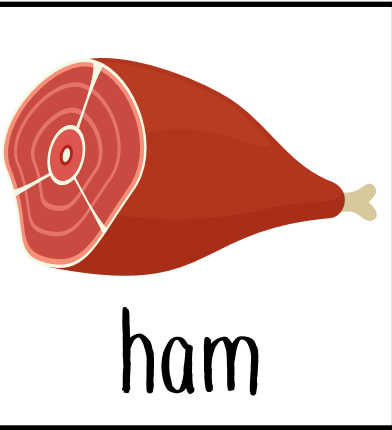


nut

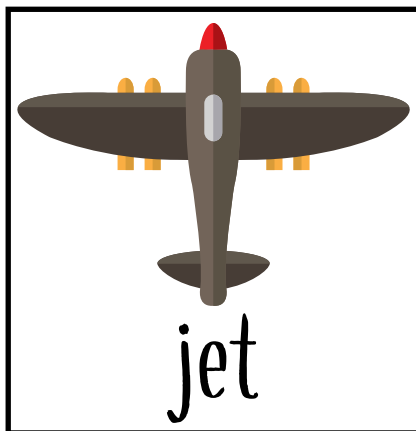
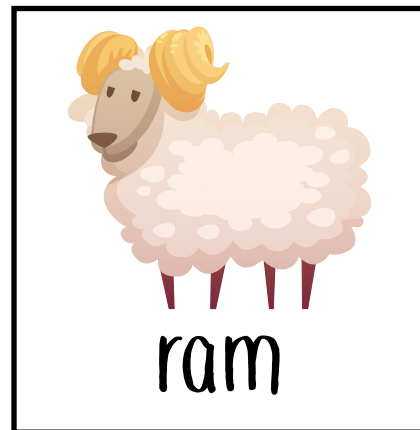
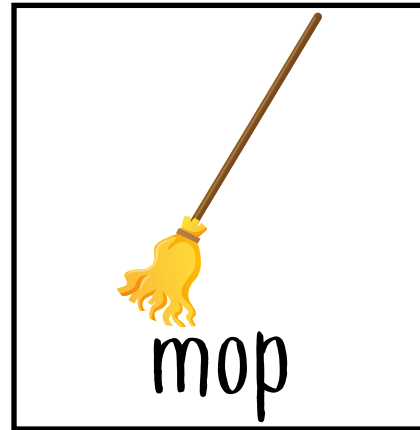
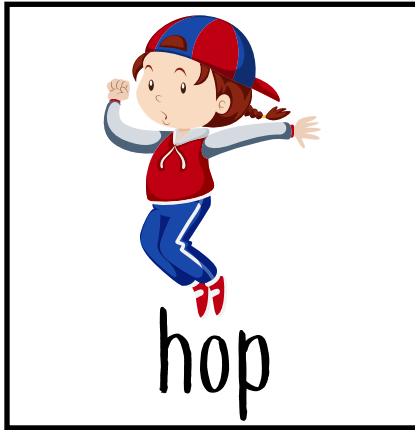
Rhyming Word Cards



Rhyming Word Cards



Rhyming Word Cards



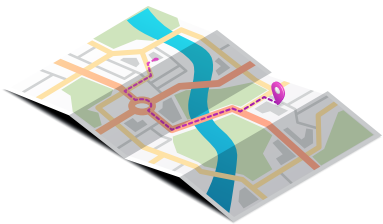
Rhyming Word Cards



mail



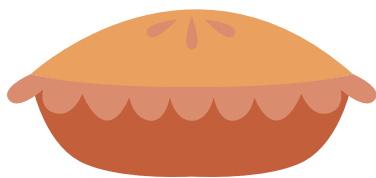
snail



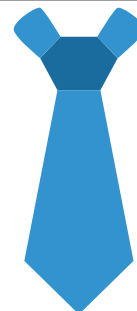
map



nap



pie



tie

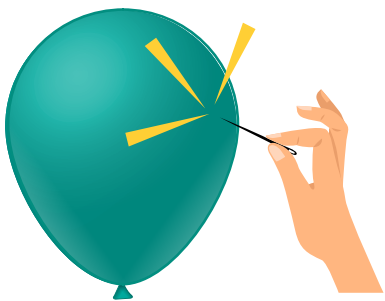
Rhyming Word Cards



pin



win



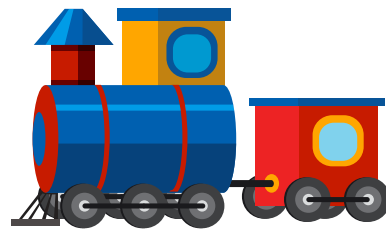
pop



stop



rain



train

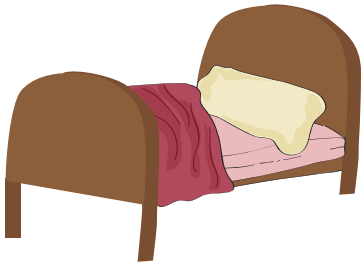
Match the Rhyming Words



ball



red



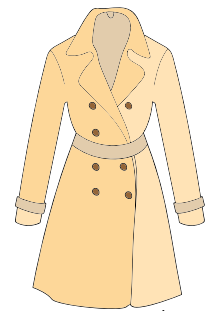
bed



tall



bat



coat



boat

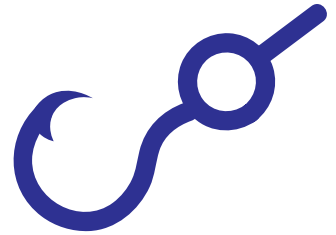


cat

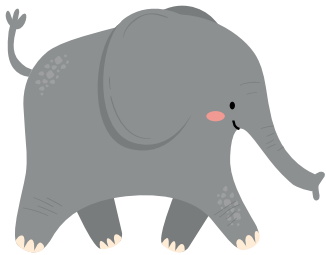
Match the Rhyming Words



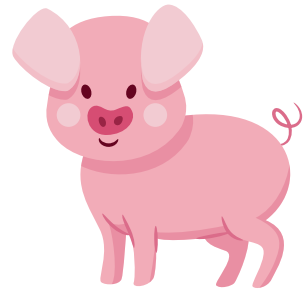
bee



hook



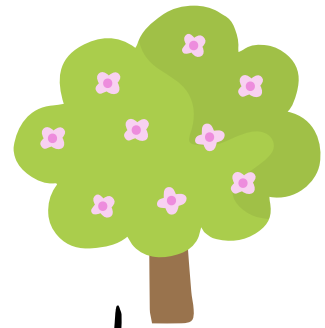
big



pig



box



tree



book

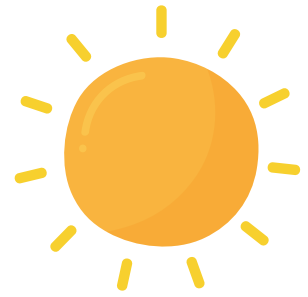


fox

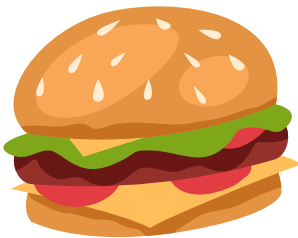
Match the Rhyming Words



bug



sun



bun



mug



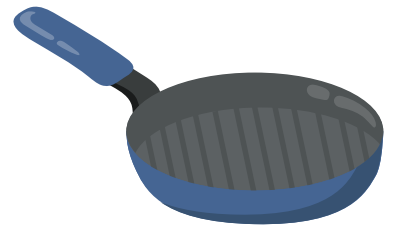
can



jar



car



pan

Match the Rhyming Words



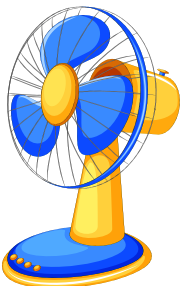
cat



cub



cut



fan



nut



man

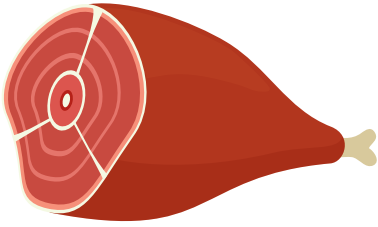


tub

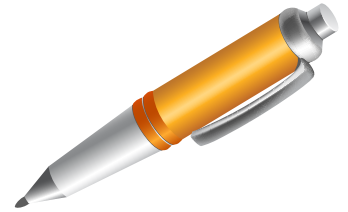


hat

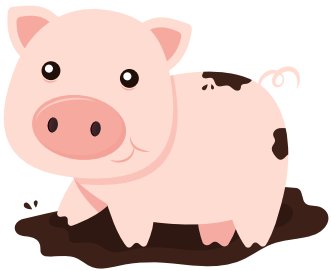
Match the Rhyming Words



ham



pen



pig



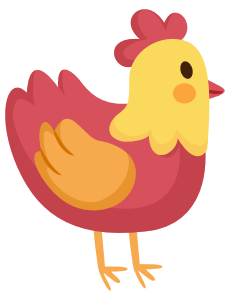
frog



dog



dig

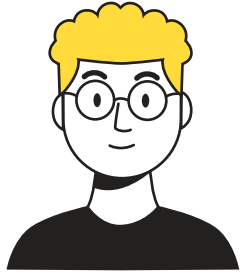


hen



yam

Match the Rhyming Words



he



vet



hop



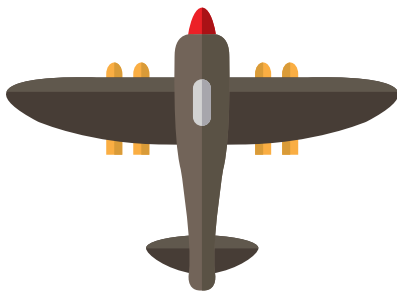
she



jam



mop



jet



ram

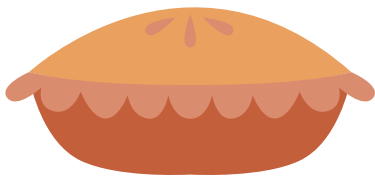
Match the Rhyming Words



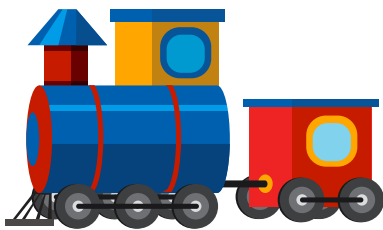
mail



map



pie



train



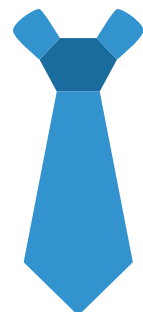
nap



rain



snail



tie

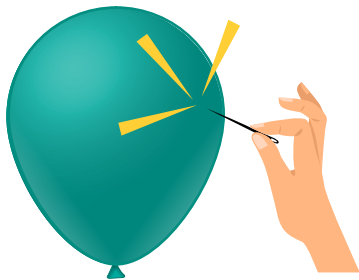
Match the Rhyming Words



pin



cat



pop



win



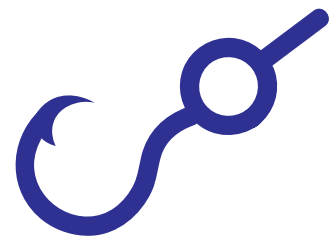
book



stop

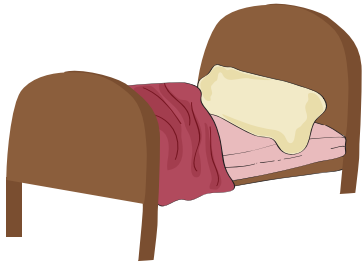


bat



hook

Match the Rhyming Words



bed



jar



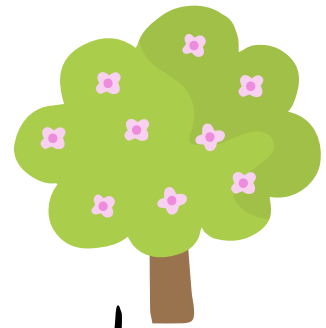
bee



red



bug



tree



car



mug



Match the Rhyming Words



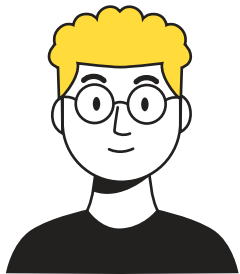
mail



cut



dog



he



nut



she



snail



frog

Circle the Rhyming Word



mail



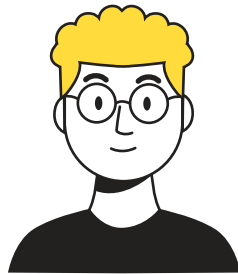
nut



frog



snail



he



she



dog



cut

Circle the Rhyming Word



ball



boat



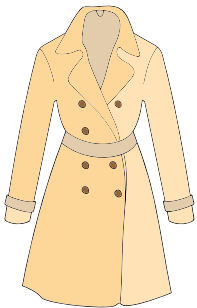
tall



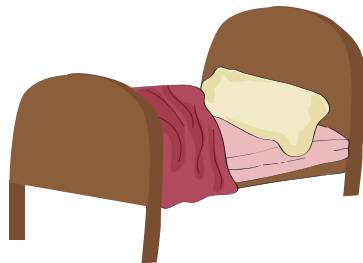
red



bat



coat

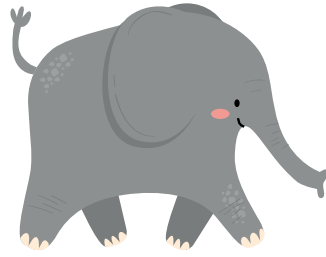


bed

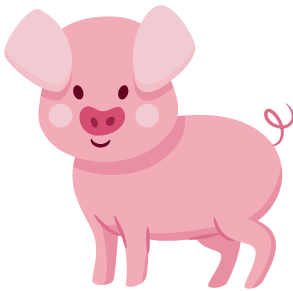


cat

Circle the Rhyming Word



big



pig



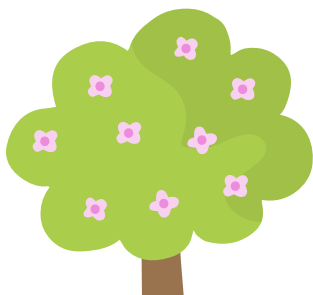
mail



book



box



tree



fox



frog

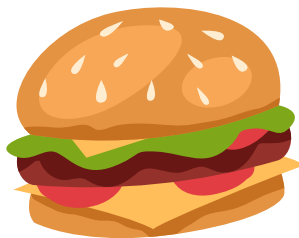
Circle the Rhyming Word



bug



can



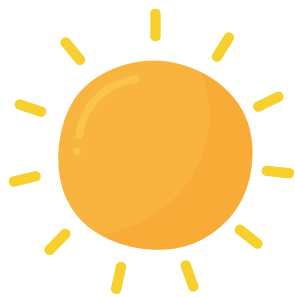
bun



mug



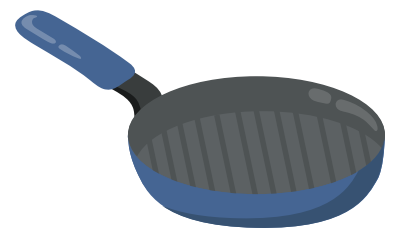
car



sun



jar



pan

Circle the Rhyming Word



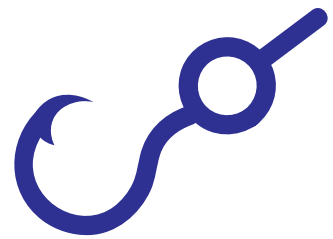
cat



man



hat



hook



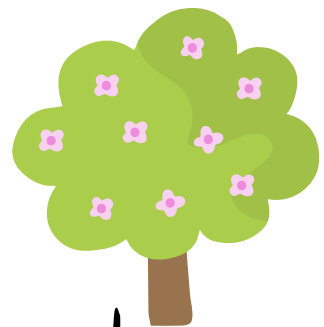
bee



red



snail



tree

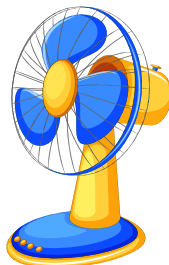
Circle the Rhyming Word



cub



tub



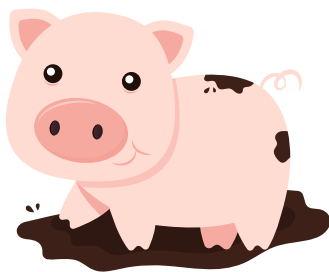
fan



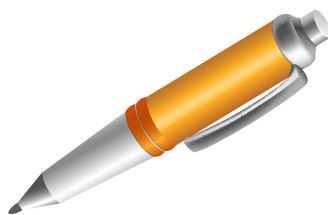
dig



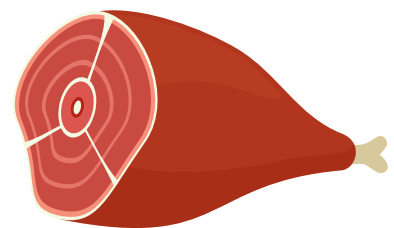
hen



pig

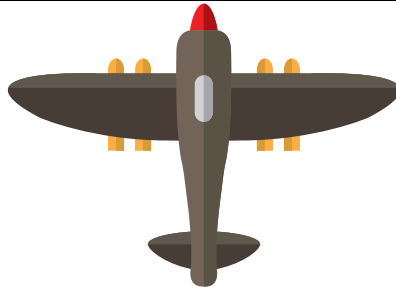


pen



ham

Circle the Rhyming Word



jet



jam



ram



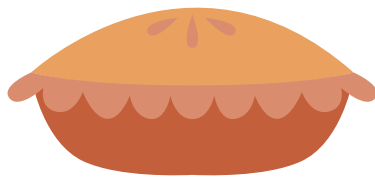
vet



map



nap

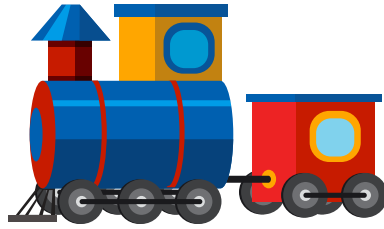


pie

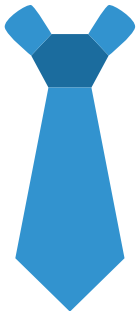


hop

Circle the Rhyming Word



train



tie



hat



rain



pin



bat



win

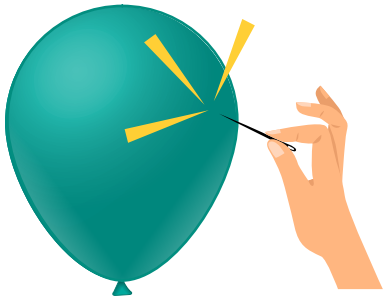


book

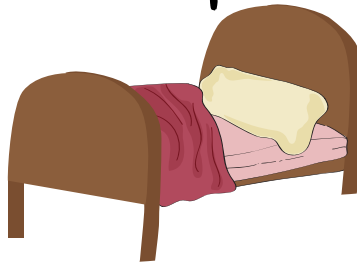
Circle the Rhyming Word



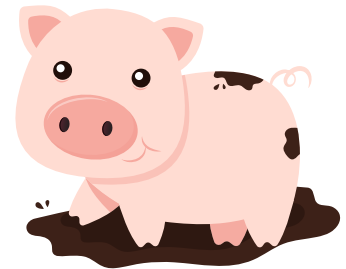
stop



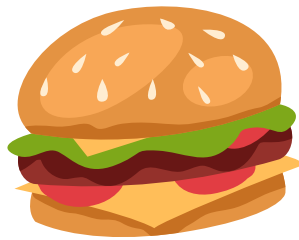
pop



bed



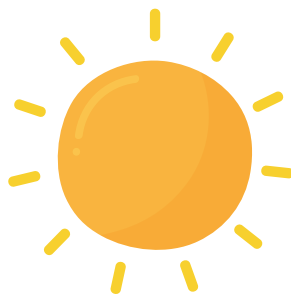
pig



bun



cub



sun



ram

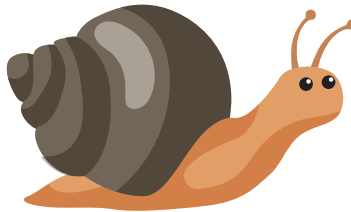
Circle the Rhyming Word



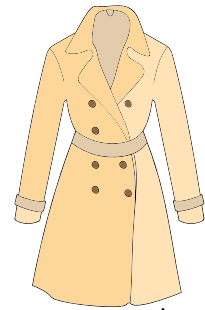
boat



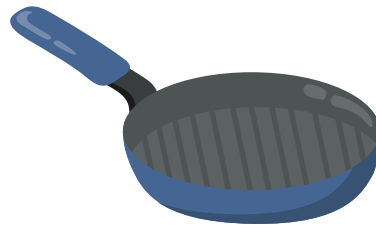
dog



snail



coat



pan



can



tub



bug